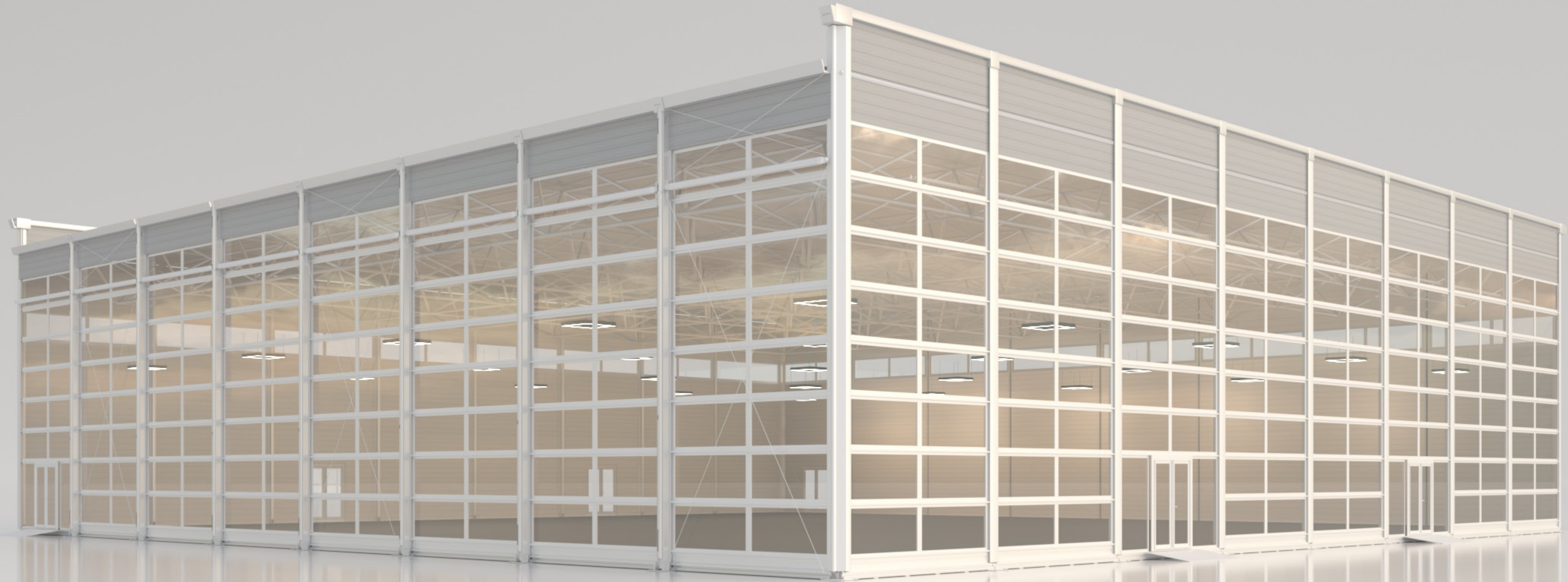


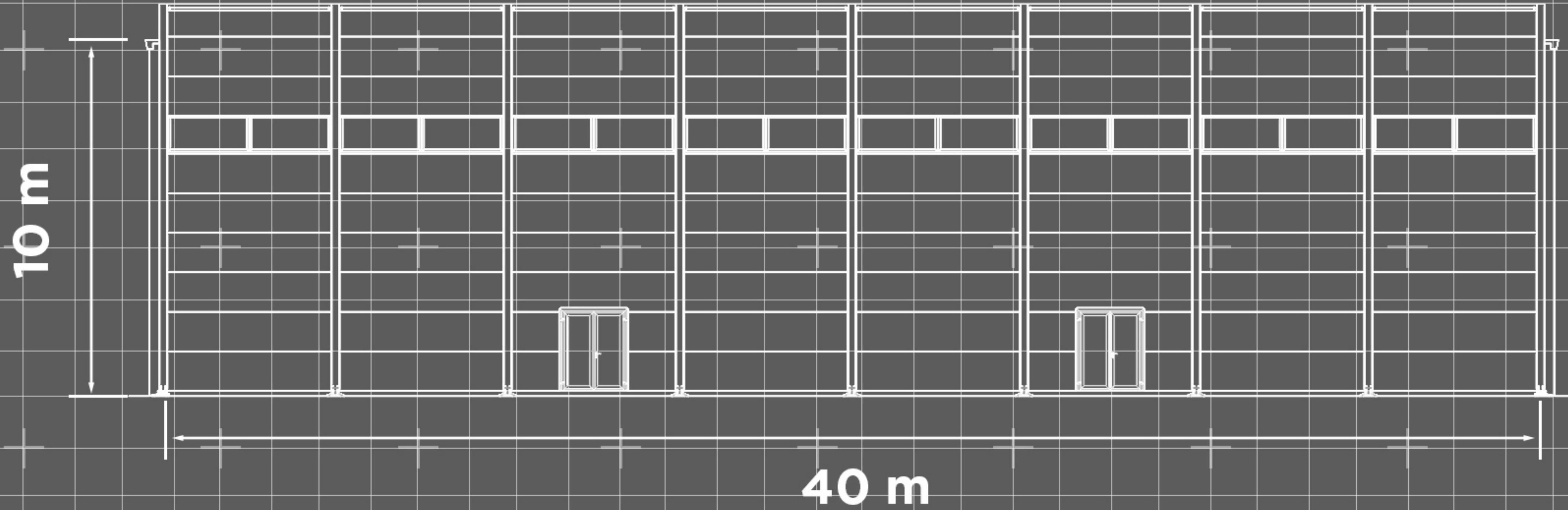


E V O L U T I O N

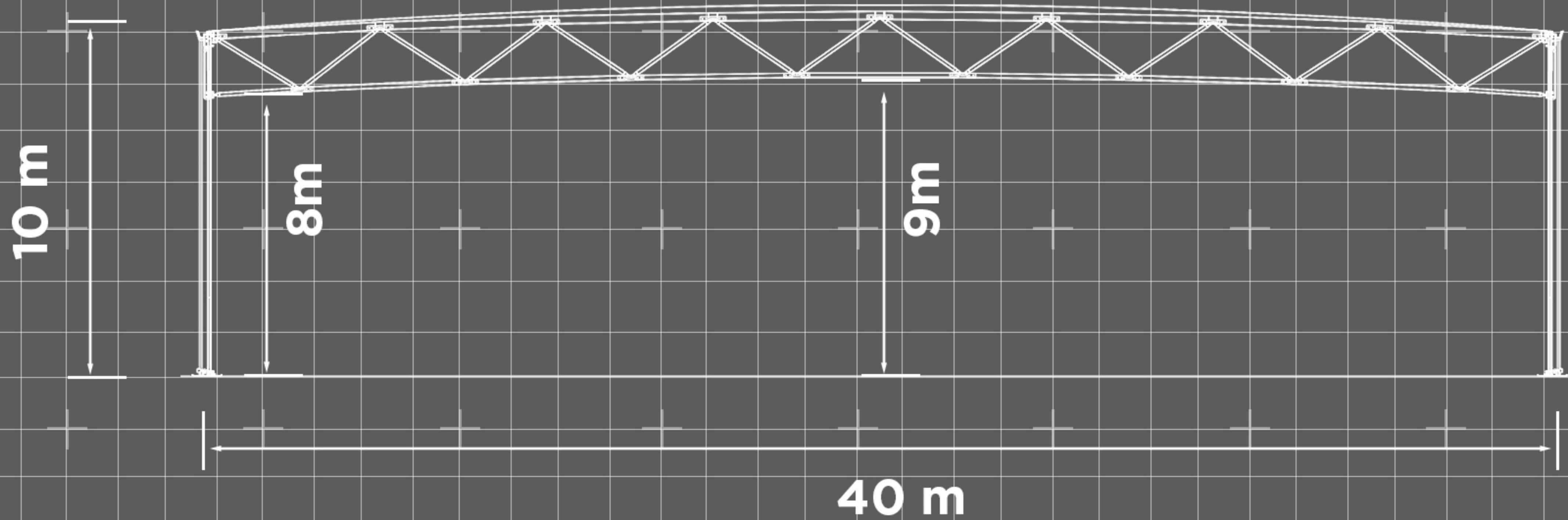


S P A T I A L I N N O V A T I O N

EXTERIOR ELEVATION



I N T E R N A L E L E V A T I O N



TECHNOLOGICALLY ADVANCED

متحف المستقبل
في القمة العالمية للحكومات
Museum of the Future
at the World Government Summit



متحف المستقبل
في القمة العالمية للحكومات
Museum of the Future
at the World Government Summit



Evolution presents a distinguished array of features, surpassing conventional structure systems, through its architectural design showcasing a robust internal space frame roof resembling a permanent building.

P R E C I S I O N - E N G I N E E R E D



Evolution boasts an innovative and meticulously engineered design, adhering rigorously to European Standard EN13782 for temporary structures and European permanent building codes.

POWERFUL FLEXIBILITY

The Evolution showcases a roof design with hanging points spaced at a 5m grid, offering ample rigging points and eliminating the need for truss systems.

Each hanging point supports an impressive weight load of 150kg, ensuring exceptional strength and flexibility.

EFFICIENT ELEVATION

كيف تساعد التكنولوجيا المؤسسات
TRANSITIONS INTO THE FUTURE

سليم إسماعيل
مدير الشؤون المؤسسية جامعة العين، والمهندس
المستشار ورئيس شركة OPENNET ومقرها في دبي
رئيسة مجلس إدارة OPENNET

على النمو لمواجهة المستقبل
HOW TECHNOLOGY GROWS UP

SALIM ISMAIL
FOUNDING EXECUTIVE DIRECTOR SINGULARITY UNIVERSITY,
FOUNDER AND CHAIRMAN OF OPENNET AND
VICE BOARD MEMBER

The Evolution employs a cutting-edge hydraulic system for automated elevation of its space-frame roof, significantly reducing the need for on-site crane operations compared to conventional structure systems.

ECO-DRIVEN CONSTRUCTION



The Evolution is the best insulated structure in its class. The roof consists of double layered thermo-insulated roof covers, and the non-glass walls are built using insulated polyurethane paneling, both significantly increasing the overall insulative properties of the structure.

This improved insulation allows it to reduce the amount of HVAC and power required for operation by up to 35%, thus reducing both the costs and the carbon footprint of the structure.

